



CITY OF WELLS CEMETERY

Rules and Regulations

Site Map

January 2025/2026

Section 1	Hours of Opening
Section 2	Notice of Interments and Scattering of Ashes
Section 3	Certificates
Section 4	Interments
Section 5	Fees and Payments
Section 6	Alteration of Arrangements
Section 7	Clerk to Fix Time of Funeral
Section 8	Conduct
Section 9	Exhumations
Section 10	Cremated Remains
Section 11	Grave Spaces
Section 12	Flower Containers
Section 13	Memorials
Section 14	Dimensions of Memorials
Section 15	Erection of Memorials
Section 16	Use of Chapel
Section 17	Complaints
Section 18	Green Burial Section
Section 19	Guidance on Transfer of Grave Ownership
Section 20	Cemetery Map

SECTION 1 HOURS OF OPENING

- (i) The cemetery will be open daily.

April to September	Monday to Saturday - 8.00 am to 8.00 pm
	Sundays & National Holidays - 10.00am to 6.00pm
1 st October to 31 st March	Monday to Saturday - 8.00am to 4.30pm
	Sundays & National Holidays – 10.00am to 4.00pm
- (ii) The office is situated at Cemetery Lodge, 127 Portway, Wells, BA5 1LY
Telephone 01749-672049 (Appointments only)
- (iii) Interments may take place on weekdays, Monday to Friday inclusive, between the hours of 9.00am and 3.00pm on Monday to Friday except Christmas Day, Good Friday and other National Holidays.

SECTION 2 NOTICE OF INTERMENTS AND SCATTERING OF ASHES

- (i) Four full days' notice in writing, excluding weekends and national holidays, must be delivered to the cemetery office between the hours of 10.00am and 1.00 pm and 4.00pm Monday to Friday. N.B. The Cemetery Manager will only accept a time and date for an interment on a "first come" basis. Interments at shorter notice will be arranged if possible at the discretion of the Cemetery Manager.
- (ii) Notice of interment must be given on the printed form supplied by the Council on which all the particulars required must be clearly and completely stated. Responsibility for any error therein must rest with the person signing the notice. Forms which are incomplete will not be accepted.
- (iii) On the purchase of the Exclusive Right of Burial for a grave, etc., the full name and address of the person to be registered as the deed holder shall be supplied. In the case of a previously purchased grave, the notice of interment must be accompanied by the Deed of Grant. If the Deed of Grant is lost or mislaid the grave will only be opened on the completion of a form of declaration and indemnity obtained from the Cemetery Manager.
- (iv) On purchasing the Exclusive Right of Burial, the lease term is currently fifty years. This lease may be extended within the final two years of expiring for an additional fee. This is subject to the grave and memorial being in a satisfactory condition. Contact the cemetery office for further information.
- (v) The selection of the space for interment in all cases shall be subject to the approval of the Cemetery Manager
- (vi) Notices of interment will be accepted if sent by post and the Council will not be responsible for any loss or delay which may occur if such notices do not reach the office in time. Notices of interment will also be accepted by telephone providing immediate confirmation is made in writing and complies with condition 2 (i) and payment of the prescribed fee is made before the interment takes place.

SECTION 3 CERTIFICATES

- (i) The appropriate certificate for disposal issued by the Registrar of Births and Deaths, or a Coroner's Order for a Burial, must be given to the Cemetery Manager in reasonable time. A certificate issued by the Cremation Authority will be required for the disposal of cremated remains.

SECTION 4 INTERMENTS

- (i) Coffins or Caskets of material considered suitable by the cemetery manager shall be used and must be clearly identified with the name of the deceased.
- (ii) When a burial has taken place, the grave will be filled with earth and the surface covered with any flower arrangements delivered to the graveside.
- (iii) The flower arrangements and wreaths, will be removed by cemetery staff when deemed appropriate. If available a temporary wooden cross with the name and grave number of the deceased will be placed on the grave for three months to enable family and friends to locate the grave.

SECTION 5 FEES AND PAYMENTS

- (i) The current list of fees and payments are printed separately. All Cheques should be made payable to **Wells City Council**. Payment by BACs is also available.
- (ii) FEES. Parishioners of Wells and St Cuthbert (Out) will be subject to **single fees** for the purchasing an Exclusive Right of Burial, including cremation plots, all interments, including cremated remains and the scattering of ashes in the Garden of Remembrance. These charges will apply to all other services provided by the cemetery.
- (iii) Non-parishioners will be subject to **double fees** for the purchasing of Exclusive Rights of Burial, including cremation plots, all interments, including cremated remains and the scattering of ashes in the Garden of Remembrance. Single fees will apply to all other services provided by the cemetery
- (iv) If an Exclusive Right of Burial was purchased by a resident of the parish of Wells and St Cuthbert (Out) but the person to be interred resides outside these parishes then **double fees** will apply.

The only exceptions to the above:

- a) A member of the public serving in Her Majesty's Armed Services whose death occurs whilst serving outside the Wells City or St Cuthbert (Out) parishes, but has been a resident in the parishes prior to enlisting, then single fees will be applied.
- b) A senior parishioner whose death occurred whilst residing in a nursing home outside the area, but had been resident in that area within twenty-four months or less on their death. In these cases, single fees will apply.

SECTION 6 ALTERATION OF ARRANGEMENTS

- (i) Before any alteration to the day or hour previously fixed for an interment to take place, notice thereof shall be given to the Cemetery Manager not later than forty-eight hours before the original time agreed. Any additional expenses incurred by the Council, as a result of such alteration, shall be paid by the person making such alteration, at the time of notification.

SECTION 7 CEMETERY MANAGER TO SELECT TIME OF FUNERAL

- (i) The Cemetery Manager shall select the time and date of the funeral if another funeral has already been arranged for the date desired.

SECTION 8 CONDUCT

- (i) Children under 14 years of age will not be admitted to the cemetery except under the care of a responsible person.
- (ii) Visitors must conduct themselves in a quiet and orderly manner and must keep to the roads and paths except when visiting a grave.
- (iii) No dogs should be brought into the cemetery, except guide dogs.
- (iv) Motor vehicles will only be permitted in the areas designated by the Council. Motor vehicles will only be permitted in the prohibited areas if on cemetery business.
- (v) No person, not being a person authorised by the Council, shall enter or remain in the cemetery at any hour when it is closed to the public.
- (vi) Members of the public are not permitted to use any mechanical or electrically driven machinery in the cemetery.
- (vii) No arrangements must be made with, or fees paid to, any employee of the Council for any private service or work in the cemetery,
- (viii) All litter must be deposited in the bins provided or taken away from the cemetery.

SECTION 9 EXHUMATIONS

- (i) In addition to all consents and payments required by law, arrangements for an exhumation must be made with the Cemetery Manager.

SECTION 10 CREMATED REMAINS

- (i) Cremated remains may only be interred in a previously purchased grave or scattered in the Garden of Remembrance. A fee will be payable for permission to scatter remains and notice must be given in accordance with Section 2 (ii).

SECTION 11 GRAVE SPACES

- (i) In Sections M, N and P no kerbs or gardens or planting of any kind will be permitted. The grave space will be grassed over by the cemetery staff at the appropriate time. No shrubs, plants trees or bushes may be planted on a grave space.
- (ii) In certain sections of the cemetery the grave space must not exceed eight feet (measured from the back of the headstone if installed) by three feet. No bushes or trees are permitted. The Council reserve the right to prune, cut down or remove any shrub, plant or flower, or turf over the grave area at any time if it is deemed unsightly or overgrown.
- (iii) Dead flowers, weeds and other matter taken off grave spaces must be put in the appropriate bins provided. Wreaths should be placed beside the rubbish bins.
- (iv) All grave spaces should be kept in a neat and orderly condition and the council may carry out any necessary work should the owners neglect to do so. The cost of the work being charged to the owner, no grave will be reopened upon which any such charge remains unpaid.

SECTION 12 FLOWER CONTAINERS

- (i) With the exception of section 'O' and the Garden of Remembrance and on graves which already have a memorial in place, flower containers may be placed upon a grave space after payment of the appropriate fee. The containers shall not be made of glass, pottery or plastic and shall not exceed twelve inches in height or width. Vases may be permitted where a headstone or memorial has been erected with permission from the cemetery manager.

SECTION 13 MEMORIALS

- (i) Memorials are only permitted to be erected upon the grave for which the Exclusive Right of Burial has been purchased.
- (ii) Application for permission to erect memorials, cut inscriptions or carry out work on existing memorials must be submitted to the Cemetery Manager, **IN DUPLICATE**, together with drawings showing full dimensions accompanied by a specification and details of every inscription.
- (iii) No work must be commissioned, or carried out on any memorial prior to the application having been approved by the Cemetery Manager, and the appropriate fee been paid.
- (iv) All memorials of whatever description placed in the cemetery, or permitted to be erected, shall remain at the sole risk of the owner thereof, and the council shall not be responsible for any damage or breakage which may occur to the same through any cause whatsoever.

- (v) No memorial shall be removed or altered after it has been erected in the cemetery, according to the design submitted to and approved by the cemetery manager, nor shall any additional inscription be cut thereon without the approval of the cemetery manager.
- (vi) A copy, **IN DUPLICATE**, of every additional inscription must be submitted to the Cemetery Manager, the prescribed fee paid and the official approval obtained before work is commenced.
- (vii) All memorials and fixing must comply with the current British Standard Code and Working Practice.
- (viii) Memorials and vases of quarried materials shall have the number of the grave space placed on the reverse side of the memorials one inch above the base line in one-inch block letters and figures. Monumental masons may only display their name in the letters not exceeding half-an-inch on the back of the base. This regulation also applies to all memorials removed for the purpose of additional inscriptions.
- (ix) No photograph may be affixed to a memorial without prior consent and should not exceed five inches high by three inches wide.
Limited Stencils or Artwork may be permitted by arrangement with the cemetery manager.
- (x) The Council shall have the power to remove at the expense of the owner/ stonemason, any memorial which has been placed within the cemetery without the necessary consent, and/or does not comply with the Cemetery Rules and Regulations.
- (xi) All memorials must comply with Health and Safety regulations. They will be checked annually by cemetery staff. Any memorial found to be unsafe will be laid flat on the grave. After twelve months we reserve the right to remove these memorials if they have not been repaired by the owner, or person responsible.

SECTION 14 DIMENSIONS OF MEMORIALS

- (i) A headstone must not exceed 870mm (thirty-four inches) in height (including base) and 610mm (twenty-four inches) in width and must be no less than 75mm (three inches) thick. A headstone 460mm (eighteen inches) high must be no less than 50mm (two inches) thick. A base is not to exceed 760mm (thirty inches) wide and 305mm (twelve inches) deep, and 100mm (four inches) thick, and can include a flower container.
- (ii) A headstone must rest on a foundation slab (not necessarily of quarried stone). This will be fixed flush with the turf, will be 915mm (thirty-six inches) wide, not less than 75mm (three inches) thick and extend to between 75mm (three inches) and 125mm (five inches) to the front and the rear of the base so that a mower may pass freely over it.
- (iii) Vases ideally must be contained within the memorial, any exceptions must be by prior permission .

- (iv) In Section `O' the memorial stone shall be 460mm (eighteen inches) wide and 305mm (twelve inches) deep, 100mm (four inches) high at the back tapering to 50mm (two inches) at the front, of natural quarried stone, incorporating a flower container (no separate vase will be allowed). The stone shall be mounted on a concrete base 610mm (twenty-four inches) wide and 460mm (eighteen inches) deep and at least 50mm (two inches) thick. The base shall be fixed flush with the turf to allow a mower to pass directly over it. The bases shall be laid end to end and back to back.
- (v) No flower vases or containers of any description are allowed in the Garden of Remembrance except by prior permission.
- (vi) A bronze plaque to be placed in the Garden of Remembrance must be five inches by three inches.
- (vii) Section `A', row B, is reserved for still-born/infants up to twelve months old. A headstone in this section shall not exceed 380mm (fifteen inches) in height and 305mm (twelve inches) in width with a minimum thickness of 50mm (two inches). The base is not to exceed 405mm (sixteen inches) in width and 305mm (twelve inches) in depth with a minimum thickness of 75mm (three inches), can include a flower container, no separate vase will be allowed. The foundation slab shall be 610mm (twenty-four inches) by 460mm (eighteen inches) with a minimum thickness of 50mm (two inches). slab will be laid flush with the turf to allow a mower to pass directly over it.

SECTION 15 ERECTION OF MEMORIALS

- (i) Memorials may only be fixed in the cemetery during normal office hours.
- (ii) Any monumental mason who removes a memorial for the purpose of carrying out an interment or for any other purpose must replace the same within twelve weeks or make alternative arrangements with the cemetery manager
- (iii) No hewing or dressing of memorials will be permitted within the cemetery without prior permission and all materials shall be conveyed in a manner which will not cause a nuisance or damage the grounds of paths. All refuse and materials must be removed from the cemetery premises.
- (iv) For stonemasons to avoid their arrangements conflicting with a funeral service and to ensure that someone is available to show location of grave, two days' prior notice by telephone should be given stating approximate time of arrival.
- (v) On arrival at the cemetery all stone masons must report to the cemetery office where memorials will be checked by the Cemetery Manager prior to fixing.

SECTION 16 USE OF CHAPEL

The chapel to the west of the main path has been provided for services of all denominations and any duly authorised minister may officiate therein, provided the service is conducted with propriety. The fee set will be payable in advance for use of the chapel.

SECTION 17 COMPLAINTS

Members of the public who wish to raise any point/s regarding the running or condition of the Cemetery should contact the cemetery manager either in person or in writing. He will respond within forty-eight hours to, either acknowledge the point/s raised or, confirm action is being taken to resolve the point/s raised.

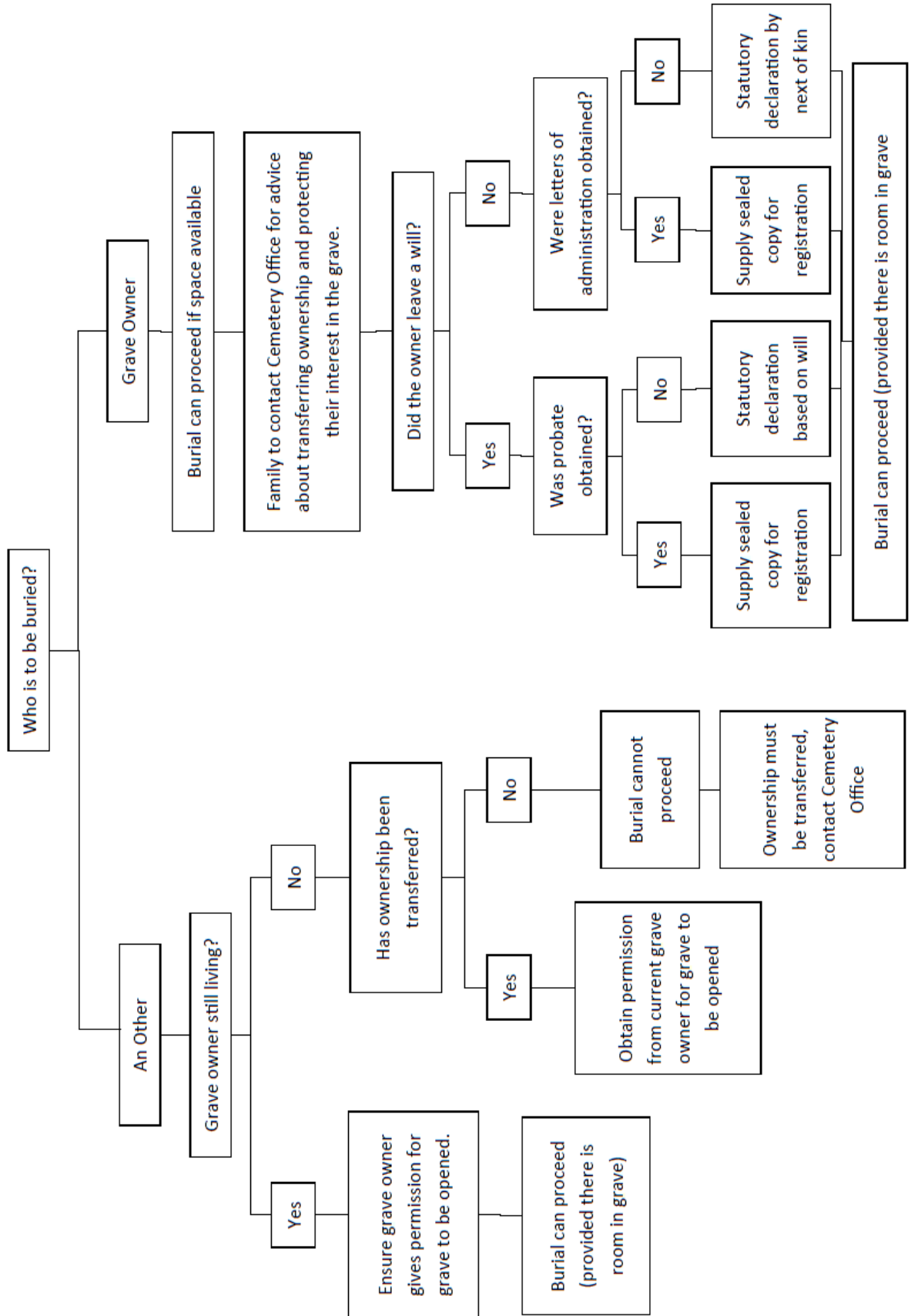
SECTION 18 GREEN BURIALS

Section S in the Cemetery is reserved as a natural meadow exclusively for the purpose of Green Burial only.

The following Rules and Regulations apply,

- (i) All Interments are single depth only
- (ii) All coffins/caskets/shrouds must be biodegradable
- (iii) Flowers and wreaths may be placed on the grave at time of burial only, these will be removed after a period of twenty-eight days.
- (iv) All graves will be grassed over and returned to natural habitat.
- (v) No permanent marking of the graves is permitted, this includes memorials, plaques, vases or any other form of identification.
- (vi) Pre-purchase plots are available by arrangement with the Cemetery Manager.

Wells City Council - Transfer of grave ownership



Wells Cemetery Map

